

# PUBLIC INFORMATION MEETING



**MAIN ROAD  
CORRIDOR**  
**SEGMENT A**

May 20<sup>th</sup>, 2019 | 6:00 - 8:00 PM  
St. John's High School  
1518 Main Road  
Johns Island, SC 29455

Charleston County is pleased to have you attend this important public meeting on the proposed improvements to the Main Road Corridor. The segment of Main Road you will be viewing tonight is the section of Main Road from Bees Ferry Road to the River Road/Chisolm Road intersection just south of the Stono River Bridge.

The purpose of this meeting is to allow the local community, concerned citizens, and project stakeholders an opportunity to review and comment on the proposed project. Seven conceptual alternatives for the interchange at US 17 and Main Road and three conceptual alternatives for the River Road/Chisolm Road intersection have been developed. This public meeting is being conducted with an informal, open house format. You are encouraged to review the various displays and discuss your questions or concerns with appropriate County staff or their representatives at this meeting. You are also encouraged to provide written comments on the forms provided, and place in the comment box tonight or email your comments by June 19, 2019. The written comments received will be evaluated and the conceptual alternatives will be refined in order to improve the project.

## PROJECT PURPOSE

The overall purpose of the project is to improve mobility and enhance traffic operations by reducing existing traffic congestion within the Main Road Corridor while accommodating future traffic needs.

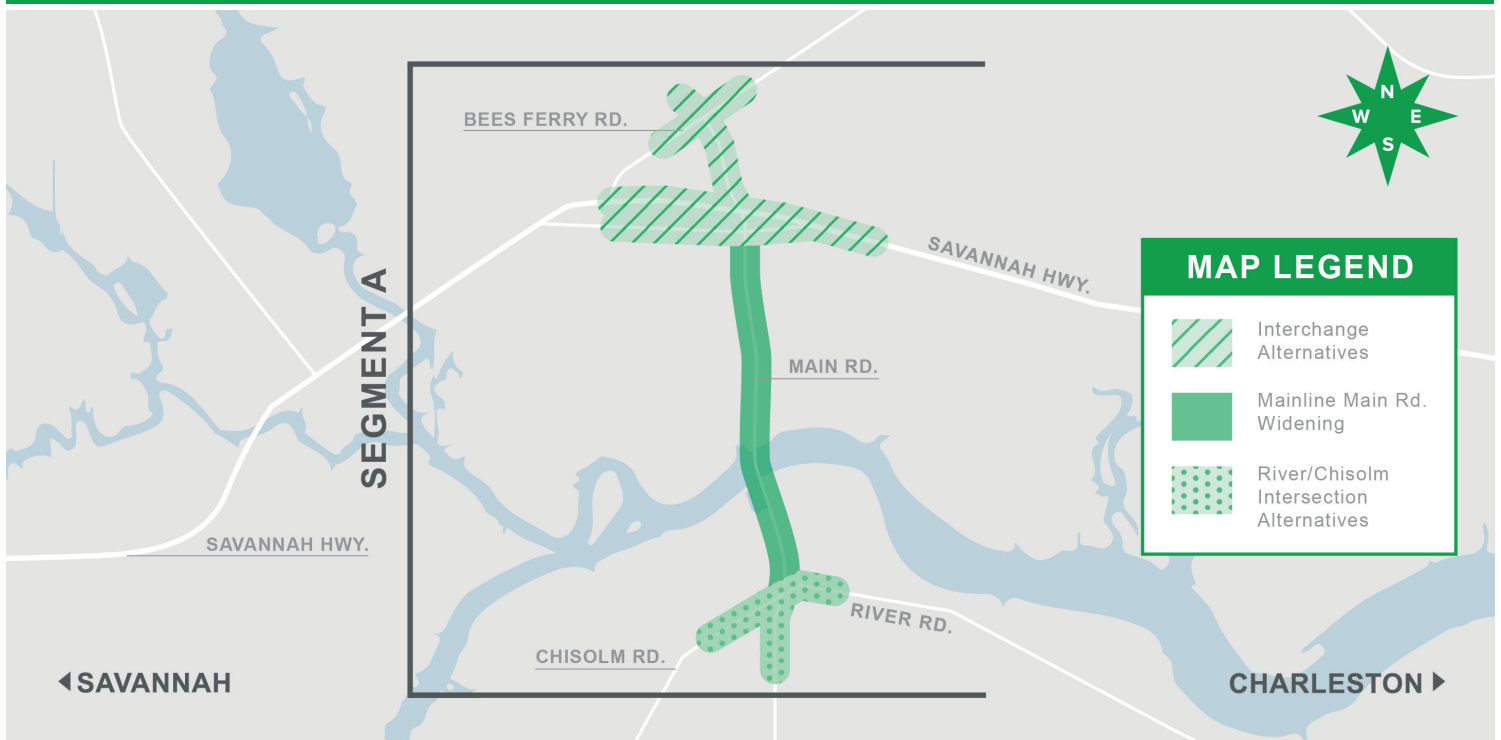
### The primary purpose of the project is to:

- Reduce congestion/improve capacity at the intersection of US 17 and Main Road
- Increase capacity on Main Road from Bees Ferry Road to River Road/Chisolm Road

### The secondary purpose of the project is to:

- Provide opportunities for bicyclists and pedestrians to travel throughout the project area
- Provide drainage and other improvements to lessen impacts to Main Road during significant rain events

## SEGMENT A STUDY AREA





## PROJECT BACKGROUND

Charleston County has identified the need to widen Main Road and to construct a new interchange at US 17 and Main Road. This project was identified in the 2016 Charleston County Sales Tax Program and is currently being funded by revenue generated through this program. In order to expedite the project, the County has separated the project into three segments. Segment A, from Bees Ferry Road to River/Chisolm Road is underway and the meeting tonight focuses on that project only. Subsequent meetings will be held on Segment C (Brownswood Road to Betsy Kerrison Parkway) once work on that segment begins and potential alternatives are generated.



## CURRENT STATUS

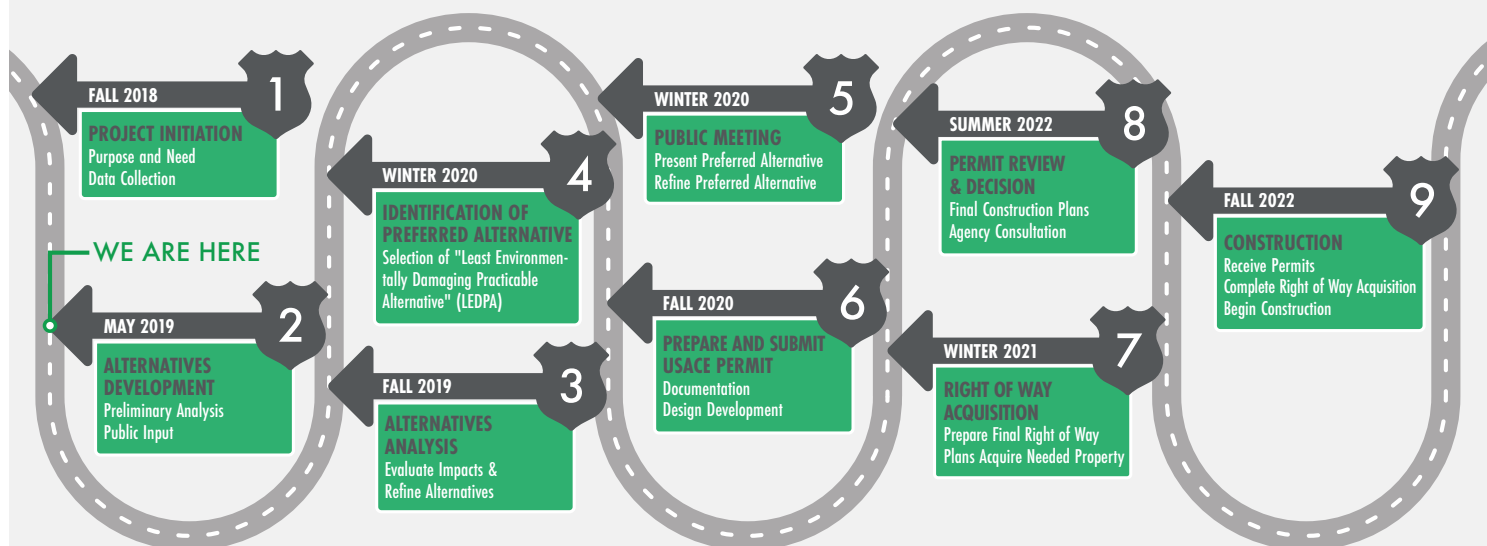
Currently, the County has identified seven conceptual alternatives for the interchange at US 17 and Main Road and three conceptual alternatives for the River Road/Chisolm Road intersection. Additionally, the widening of Main Road and US 17 through the project limits is currently shown symmetrically along the existing centerline. All of these conceptual alternatives are under consideration and the County desires your input to assist them in determining the preferred alternative for each.



## PROJECT DEVELOPMENT AND SCHEDULE

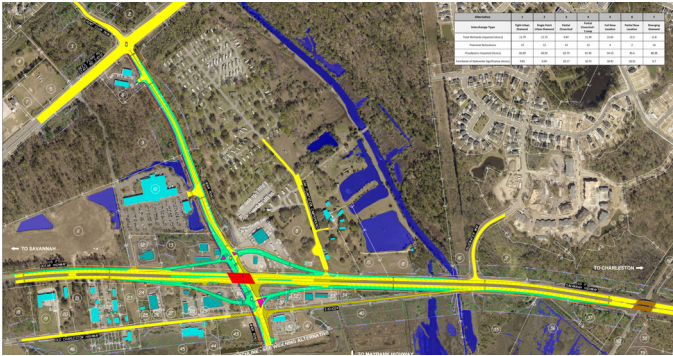
Charleston County is currently performing environmental studies and preliminary design on the proposed project. The information gathered from the various studies, along with your input, will be used to refine the project design and identify a Preferred Alternative. Once selected, the Preferred Alternative will be presented at a public meeting, at which time the public will have another opportunity to ask questions and provide input on the project. The right-of-way acquisition phase and final design will be initiated following that public meeting.

## NATIONAL ENVIRONMENTAL POLICY ACT (NEPA) PROJECT DEVELOPMENT TIMELINE



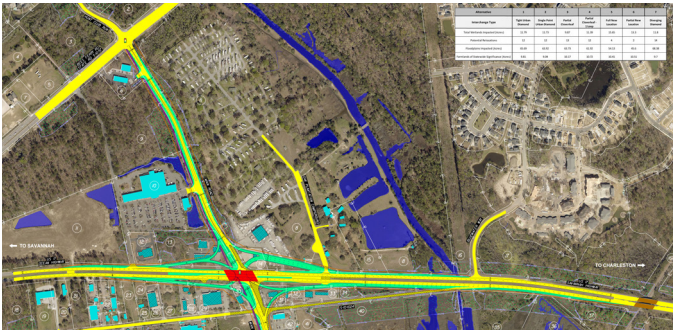
# SEGMENT A ALTERNATIVES

## US 17 and Main Road Intersection Improvements and Main Road Improvements from Bees Ferry Road to River Road



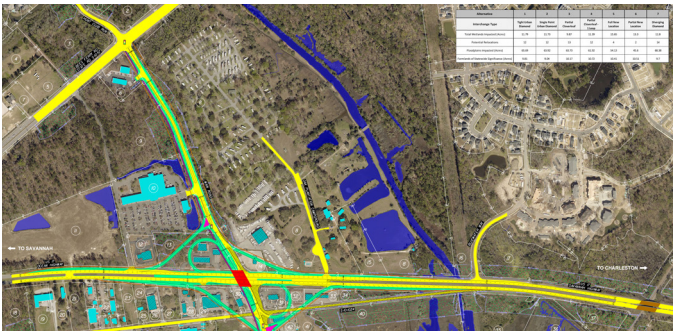
### ALTERNATIVE 1

Interchange Type: **Tight Urban Diamond**  
 Total Wetlands Impacted (Acres): **11.79**  
 Potential Relocations: **12**  
 Floodplains Impacted (Acres): **65.69**  
 Farmlands of Statewide Significance (Acres): **9.81**



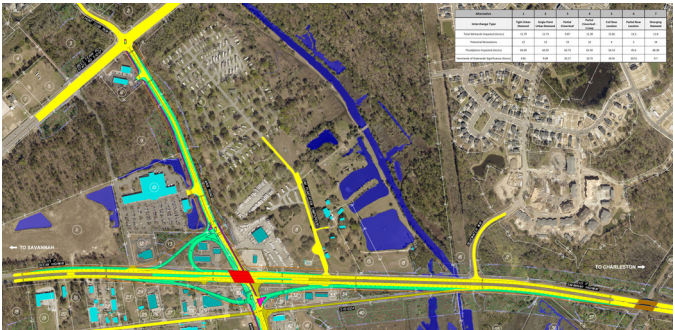
### ALTERNATIVE 2

Interchange Type: **Single Point Diamond Interchange**  
 Total Wetlands Impacted (Acres): **11.73**  
 Potential Relocations: **12**  
 Floodplains Impacted (Acres): **63.92**  
 Farmlands of Statewide Significance (Acres): **9.04**



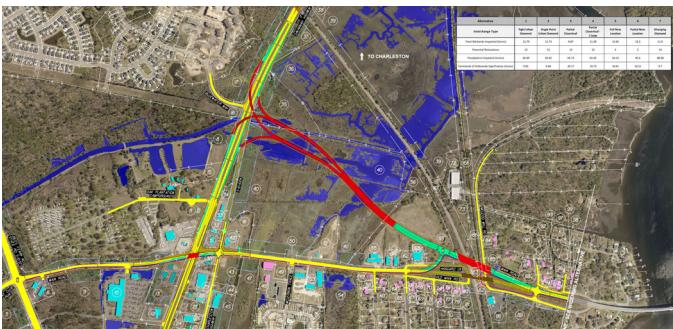
### ALTERNATIVE 3

Interchange Type: **Partial Cloverleaf**  
 Total Wetlands Impacted (Acres): **9.87**  
 Potential Relocations: **13**  
 Floodplains Impacted (Acres): **63.73**  
 Farmlands of Statewide Significance (Acres): **10.17**



### ALTERNATIVE 4

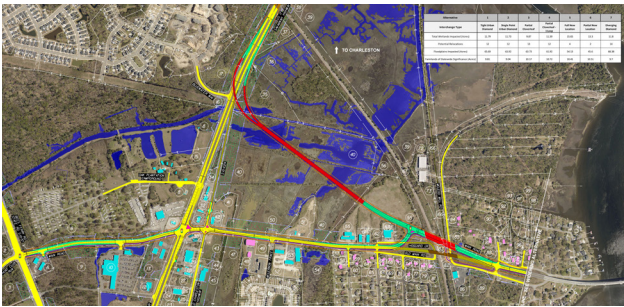
Interchange Type: **Partial Cloverleaf – 1 Loop**  
 Total Wetlands Impacted (Acres): **11.39**  
 Potential Relocations: **12**  
 Floodplains Impacted (Acres): **61.92**  
 Farmlands of Statewide Significance (Acres): **10.72**



### ALTERNATIVE 5

Interchange Type: **Full New Location**  
 Total Wetlands Impacted (Acres): **15.65**  
 Potential Relocations: **4**  
 Floodplains Impacted (Acres): **54.13**  
 Farmlands of Statewide Significance (Acres): **10.41**





## ALTERNATIVE 6

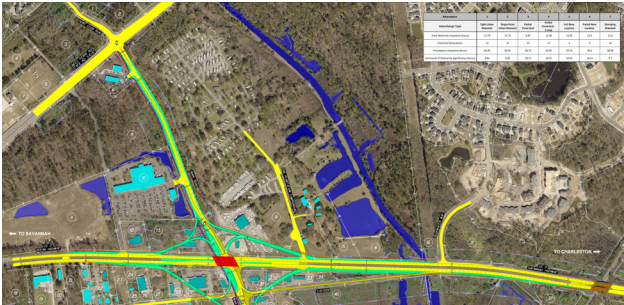
Interchange Type: **Partial New Location**

Total Wetlands Impacted (Acres): **13.3**

Potential Relocations: **2**

Floodplains Impacted (Acres): **45.6**

Farmlands of Statewide Significance (Acres): **10.51**



## ALTERNATIVE 7

Interchange Type: **Diverging Diamond**

Total Wetlands Impacted (Acres): **11.8**

Potential Relocations: **14**

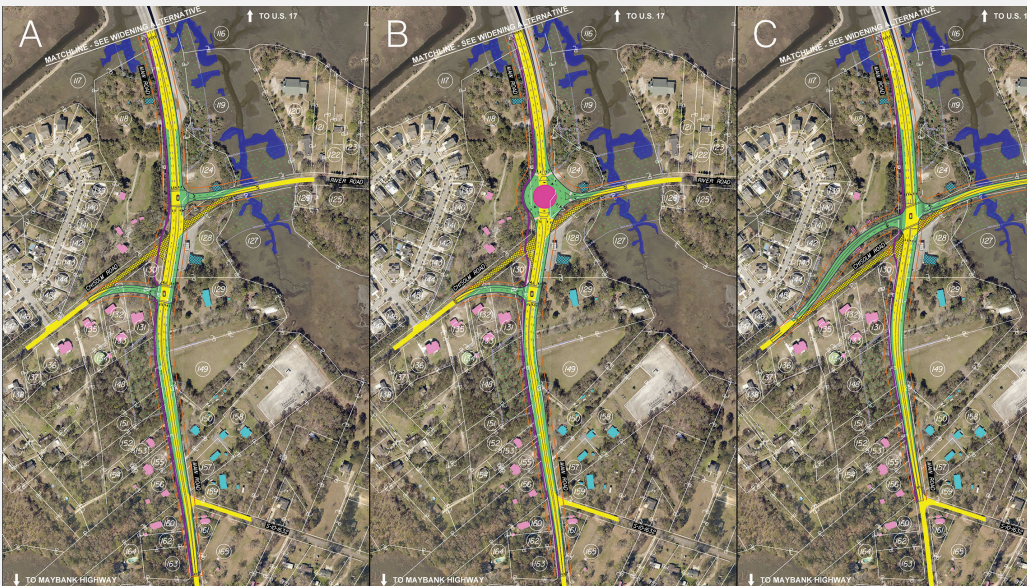
Floodplains Impacted (Acres): **68.38**

Farmlands of Statewide Significance (Acres): **9.7**



## MAIN ROAD MAINLINE ALTERNATIVE

## INTERSECTION ALTERNATIVES



## RIVER ROAD & CHISOLM ROAD ALTERNATIVES

## STAY INVOLVED

Submit your comments and view alternatives on the project website at [MainRoadCorridor.com/SegmentA](http://MainRoadCorridor.com/SegmentA)



Follow Charleston County on Social Media @ChasCountyGov